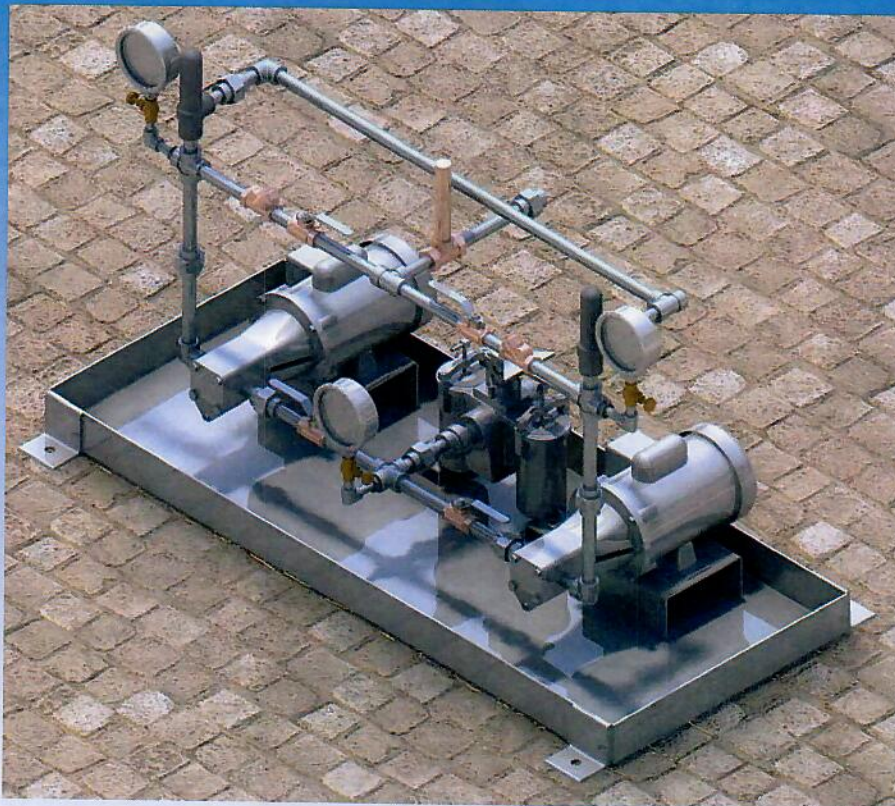


Series "ALOPS" Packaged Light Fuel Oil Pump Sets



Economical pumping solutions, backed by Alstrom's 70 years of experience in the heat transfer & fluid handling industry

**Capacities of
30 to 600 GPH**

**Pressures up
to 300 PSI**

- ◆ **Factory built and tested for reliability and ease of installation**
- ◆ **Easily customizable to fit your specification**
- ◆ **Covered by ALSTROM quality assurance program**
- ◆ **Expedited submittals and delivery available**
- ◆ **3D drawings and models**



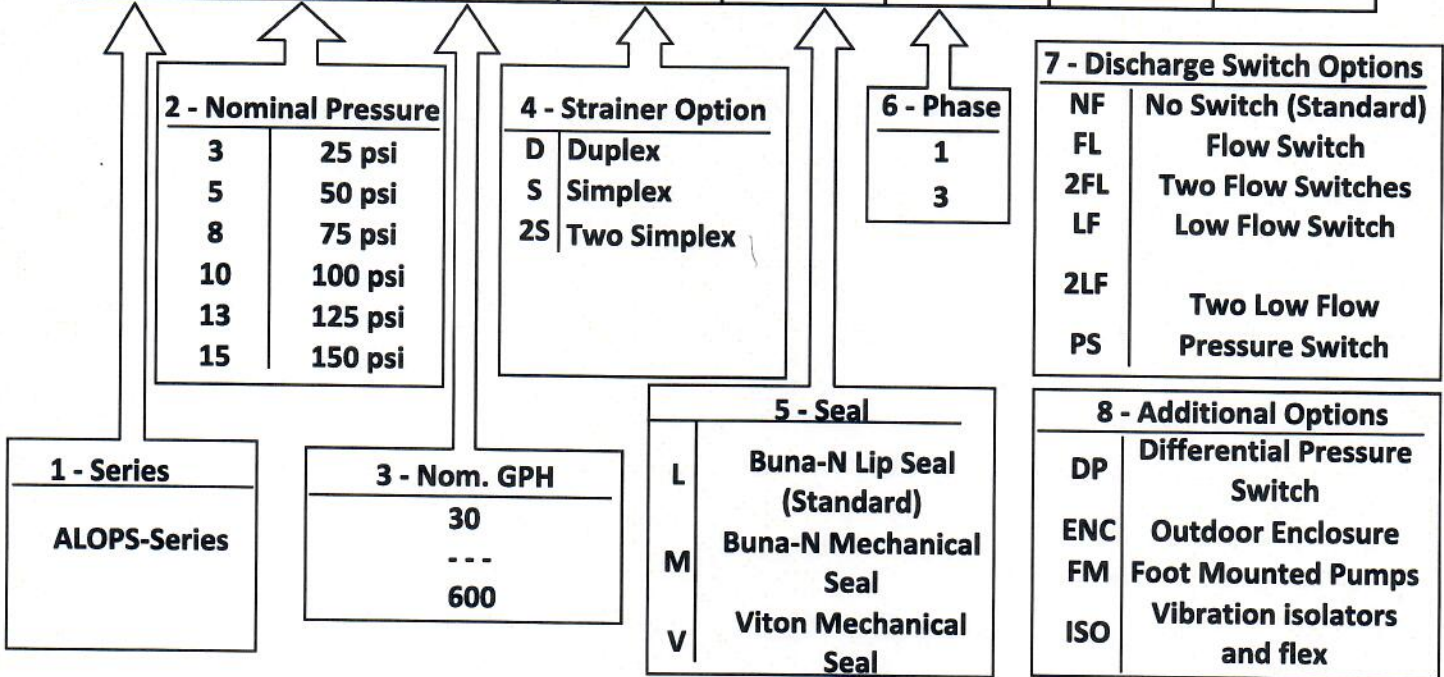
**HEAT TRANSFER EQUIPMENT
&
SYSTEMS**

For assistance with your application, questions, or quotations, please contact us:

Email: info@alstromcorp.com
Ph: 1 - 800 - 223 - 4901
Fax: 1 - 718 - 409 - 3605

E-Series Model Numbers

1	2	3	4	5	6	7	8



"ALOPS"-Series Quote RFQ

Please fill out all **bold** fields

Flow: _____ **GPM** **Pressure:** _____ **PSI** **Company** _____
Available Ph/Hz/Voltage: _____ **Ph/** _____ **Hz/** _____ **V** **Contact Name** _____
Position _____

Mechanical Options

Strainer (Choose one): Simplex Duplex

Seals (Choose one): Buna-n Lip Seals
 Buna-n Mechanical Seals
 Viton Mechanical seals

- UL Listed Strainer
- UL Listed pumps
- Welded Piping (Recommended for 150 psi and above)
- Foot Mounted Pumps
- Flexible pump connections and vibration isolators
- Painted carbons steel pump set enclosure

Controls Options

- NEMA: 1 3R 4 4X 12 Other _____
 UL 508A Labeled
- Lead Lag with
 - Flow Switch (Standard for most applications)
 - Pressure Switch
 - Auto Alternation
 - Leak Switch
 - Strainer DP Switch

Phone _____

Email _____

Job Name _____

Date Quote Needed _____

- Please Send Me a Customized Specification
- My Specification is Attached

Additional Information:



HEAT TRANSFER EQUIPMENT & SYSTEMS
 Innovators since 1939

1-800-223-4901
 info@alstromcorp.com.com

Standard Features



- ◆ Duplex arrangement (Simplex option available)
- ◆ Ball valves and check valves for pump isolation
- ◆ Reliable Viking™ pumps, UL listed pumps available
- ◆ Name brand motors
- ◆ Stainless Steel, liquid filled gauges
- ◆ Drip pan base with 2 3/4" lip
- ◆ UL listed duplex strainer for continuous operation
- ◆ External safety relief valves
- ◆ Single or three phase motors
- ◆ Comprehensive factory testing

Control Options

- ◆ Customized for your application
- ◆ PLC based controls available
- ◆ Lead-Lag operation
- ◆ Auto alternation
- ◆ Pan leak detection
- ◆ Differential pressure switches
- ◆ Flow or pressure switches
- ◆ NEMA 1, 4, 4X, 12 available



Custom Models

From high pressure fuel oil systems to bio-diesel batching, we have experience with a wide variety of applications.

Contact us for a spec. customized for your application

11 Jocama Blvd.
Suite 11A
Old Bridge, NJ 08857 USA

Sample of Custom Options

- ◆ Pump set Enclosures
- ◆ Back pressure valves, installed or shipped loose
- ◆ Simplex strainers
- ◆ Flexible connections
- ◆ Vibration isolators
- ◆ Flow switches and meters
- ◆ Temperature switches
- ◆ Additional options available

